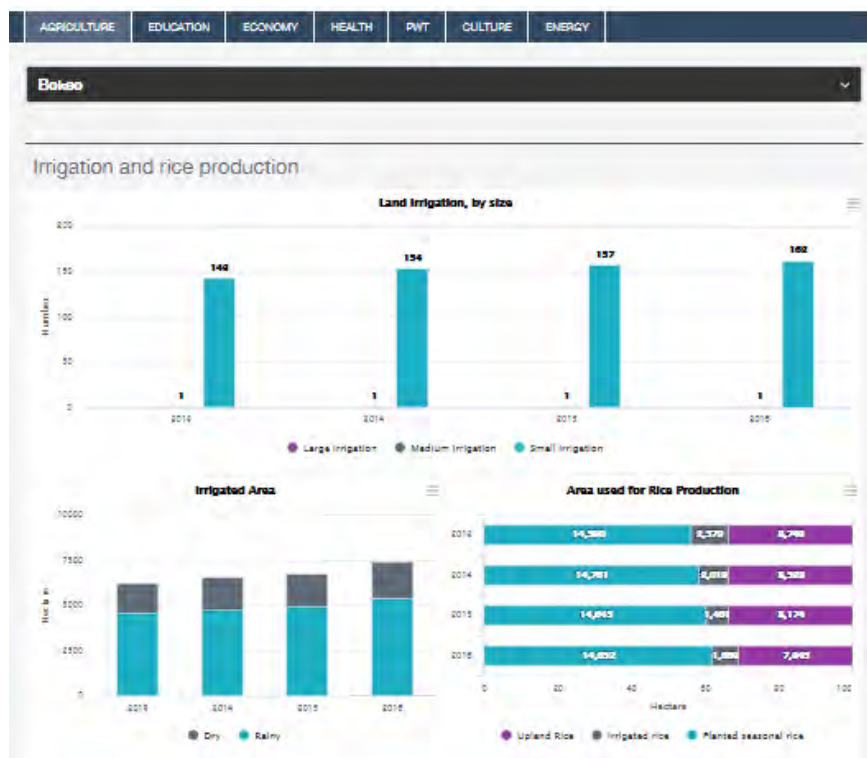


# Lao Province Dashboard

Better provincial data for better results



With its intuitive and interactive dashboard, Lao Province makes it easy to access administrative and socioeconomic data on the provinces of the Lao People’s Democratic Republic.

Through support from UNICEF, the Lao Statistics Bureau (LSB) created a dashboard to service the province of Saravane. Following dashboard’s success with different provincial ministries, other provinces have expressed an interest in integrating the tool into their own efforts. A common need among them is the capacity to disseminate data in an intuitive and interactive format. With Saravane’s success as a model, these new dashboards have allowed more of Laos’ states to measure progress on key socioeconomic indicators.

In 2017, CSF standardized the databases from Bokeo, Huaphanh, Xiengkhuang and Luangnamtha using the data to create dashboards for each province.

## Features

- Administrative & socio-economic data are presented in a standard, intuitive format
- Visual and analytical representations available for a large volume of data
- Responsive mobile phone interface for analyzing data on the go

## Benefits

- Reliable access to key performance indicators in a uniform repository for provinces and districts
- Data is intuitively understood, no training required
- Data analytics produce visualizations out of large volumes of data, to illustrate key trends and gaps
- Adapts to national reporting needs

## Facts

Stakeholders	UNICEF, Lao Statistics Bureau (LSB)
Geographic Area	Lao PDR
Time Period	2017
Topics	Administrative and Socio-economic Indicators
Tools	Dashboard, website, database, content development
Services	Software development; In-Country training
Link	<a href="http://devinfo-cloud.com/data-dashboards/Lao/LaoInfo">http://devinfo-cloud.com/data-dashboards/Lao/LaoInfo</a>
Reference	Sulaphanh Phimpaphongsavath (Lao Statistics Bureau)
Project Administrator	Samip Gupta <a href="mailto:sgupta@dataforall.org">sgupta@dataforall.org</a>

## Budget

USD 0.33 million